

**Appendix 1 for D Nacey Music 757 June 2010**

**Transcription #1: 'Zhivago' by Kurt Rosenwinkel**

VERY FAST 3/4

**ZHIVAGO**

KURT ROSENWINKEL  
TRANSCRIBED BY DIXON NACEY

(BEGINS AT 3:15)

5

9

13

17

21

25

29

33

37

41

45 Ema7 Bb7sus Bma7 C#mi7

49 D#mi7 Eb/E Bb7sus Bma7

53 C#mi7 D#mi7 Ema7 Bb7sus

57 Bbmi11 Abmi11 Gbma7 Fmi7

61 Ebmi7add4 Dbma7 Cmi7(#5) Bma13

65 Bbmi11 Abmi11 Gbma7 Fmi7

69 Ebmi7add4 Dbma7 Cmi7(#5) Bma13

73 B Ebmi Eb/E Fmi F#mi9

77 Ebmi Eb/E Fmi F#mi9

81 Ebmi Eb/E Fmi F#mi9

85 Ebmi Eb/E Fmi F#mi9

Detailed description: This is a guitar chord chart for a piece in the key of B-flat major. The score is written in standard musical notation on a treble clef staff. It consists of 12 lines of music, with measure numbers 45, 49, 53, 57, 61, 65, 69, 73, 77, 81, and 85 marked at the beginning of each line. Above the notes, various chords are indicated in red text. The chords include triads (Ema7, Bb7sus, Bma7, C#mi7, D#mi7, Eb/E, Bb7sus, Bma7, C#mi7, D#mi7, Ema7, Bb7sus, Fmi7, F#mi9), dyads (Bbmi11, Abmi11, Gbma7, Fmi7, Ebmi, Eb/E, Fmi, F#mi9), and full figured bass chords (Ebmi7add4, Dbma7, Cmi7(#5), Bma13). The notation includes eighth and quarter notes, rests, and bar lines. The key signature has two flats (B-flat and E-flat).

**A**  $G^{\flat}ma7$   $E^{\flat}mi7$   $G^{\flat}ma7$   $E^{\flat}mi7$

89  $G^{\flat}ma7$   $E^{\flat}mi7$   $G^{\flat}ma7$   $Csus7$

93  $A^{\flat}sus7$   $Ama7$   $Bmi7$   $C^{\sharp}mi7$

97  $Dma7$   $A^{\flat}sus7$   $G^{\flat}ma7$   $E^{\flat}mi7$

101  $G^{\flat}ma7$   $E^{\flat}mi7$   $G^{\flat}ma7$   $E^{\flat}mi7$

105  $Csus7$   $Fma7$   $E^{\flat}7(b9)$   $B^{\flat}sus$

109  $B^{\flat}ma7$   $Gmi7$   $Dmi7$   $Fma7$

113  $D^{\flat}ma7$   $Ami7(b6)$   $Fma7$   $Dmi7$

117  $Fma7$   $Dmi7$   $Fma7$   $Dmi7$

121  $B^{\flat}7sus$   $Ema7$   $B^{\flat}7sus$   $Bma7$

125  $C^{\sharp}mi7$   $D^{\sharp}mi7$   $Ema7$   $B^{\flat}7sus$

129

133 B $\flat$ ma7 C $\sharp$ m7 D $\sharp$ m7 E $\flat$ /E

137 B $\flat$ 7sus B $\flat$ ma7 C $\sharp$ m7 D $\sharp$ m7

141 E $\flat$ ma7 B $\flat$ 7sus B $\flat$ m11 A $\flat$ m11

145 G $\flat$ ma7 Fm7 E $\flat$ m7ADD $\sharp$  D $\flat$ ma7

149 C $\flat$ m7( $\sharp$ 5) B $\flat$ ma13 B $\flat$ m11 A $\flat$ m11

153 G $\flat$ ma7 Fm7 E $\flat$ m7ADD $\sharp$  D $\flat$ ma7

157 C $\flat$ m7( $\sharp$ 5) B $\flat$ ma13 **B** E $\flat$ m (SOLO CONTINUES...) E $\flat$ /E

161 Fm F $\sharp$ m $\flat$ 9 E $\flat$ m E $\flat$ /E

163 Fm F $\sharp$ m $\flat$ 9 E $\flat$ m E $\flat$ /E

169 Fm F $\sharp$ m $\flat$ 9

173 Fm F $\sharp$ m $\flat$ 9

**Transcription #2: 'Minor Blues' by Kurt Rosenwinkel**

**MINOR BLUES TRANSCRIPTION**

KURT ROSENWINKEL

8<sup>m</sup>-----  
Ebm7

(8)-----

3

Ebm7

8<sup>m</sup>-----

7

(8)-----

11

Abm7

8<sup>m</sup>-----

15

Ebm7

B<sup>9</sup>sus                      A7                      Am7

19

Ebm7<sub>3</sub>

23

Ebm7

27

31

Abm7

35

Ebm7

39

B<sup>9</sup>sus                      Ama7                      Ami7

43

Ebm7

47

# Transcription #3: 'Countdown' by Jonathan Kreisberg

## COUNTDOWN

FAST LATIN

COLTRANE (VERSION BY J KREISBERG)

TRANSCRIBED BY D NACEY

Emi7 F7 Bbma7 Db7 Gbma7 A7 Dma7

Dmi7 Eb7 Abma7 B7 Ema7 G7 Cma7

Cmi7 Db7 Gbma7 A7 Dma7 F7 Bbma7

Emi7 F7 Bbma7 Eb7

Emi7 F7 Bbma7 Db7 Gbma7 A7 Dma7

Dmi7 Eb7 Abma7 B7 Ema7 G7 Cma7

Cmi7 Db7 Gbma7 A7 Dma7 F7 Bbma7

Emi7 F7 Bbma7 Eb7

33

Emi7 F7 Bbma7 Db7 Gbma7 A7 Dma7

37

Dmi7 Eb7 Abma7 B7 Ema7 G7 Cma7

41

Cmi7 Db7 Gbma7 A7 Dma7 F7 Bbma7

45

Emi7 F7 Bbma7 Eb7

49

Emi7 F7 Bbma7 Db7 Gbma7 A7 Dma7

53

Dmi7 Eb7 Abma7 B7 Ema7 G7 Cma7

57

Cmi7 Db7 Gbma7 A7 Dma7 F7 Bbma7

61

Emi7 F7 Bbma7 A7ALT



Em7 F7 B<sup>b</sup>MA7 D<sup>b</sup>7 G<sup>b</sup>MA7 A7 D<sup>+</sup>MA7

D<sup>+</sup>Mi7 Eb7 A<sup>b</sup>MA7 B7 E<sup>+</sup>MA7 G7 C<sup>+</sup>MA7

C<sup>+</sup>Mi7 D<sup>b</sup>7 G<sup>b</sup>MA7 A7 D<sup>+</sup>MA7 F7 B<sup>b</sup>MA7

Em7 F7 B<sup>b</sup>MA7 A7

Em7<sub>3</sub> F7 B<sup>b</sup>MA7 D<sup>b</sup>7 G<sup>b</sup>MA7 A7 D<sup>+</sup>MA7

D<sup>+</sup>Mi7 Eb7 A<sup>b</sup>MA7 B7 E<sup>+</sup>MA7 G7 C<sup>+</sup>MA7

C<sup>+</sup>Mi7 D<sup>b</sup>7 G<sup>b</sup>MA7 A7 D<sup>+</sup>MA7 F7 B<sup>b</sup>MA7

Em7 F7 B<sup>b</sup>MA7 A<sup>+</sup>7

# Transcription #4: 'Windows' by Jonathan Kreisberg

VERY FAST 3/4

## WINDOWS

TRANSCRIBED BY D NACEY

CHICK COREA (KREISBERG VERSION)

Bm<sup>6/9</sup>



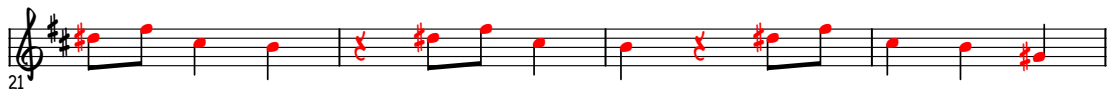
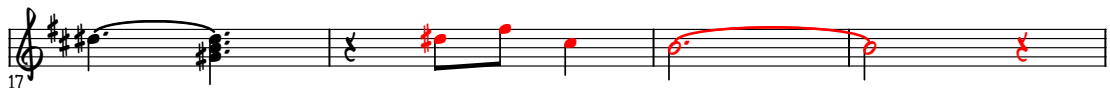
G#<sup>9</sup>/B



D<sup>9</sup>sus



E<sup>9</sup>M<sup>7</sup>(#11)



A<sup>b</sup>7

A<sup>7</sup>

A<sup>b</sup>7

A<sup>7</sup>



A<sup>b</sup>7

A<sup>7</sup>

A<sup>b</sup>7

A<sup>7</sup>



E<sup>9</sup>M<sup>7</sup>

D#m<sup>7</sup>(no<sup>5</sup>)

C#m<sup>7</sup>

C#m<sup>7</sup>/B



A#<sup>b</sup>7 A#<sup>b</sup>7/G# D#7(b9)

37

G#m7 G#m7/F# C#9

41

E<sup>b</sup>m7 D#m7(no5) C#m7 C9

45

Bm<sup>6/9</sup>

49

G#<sup>b</sup>/B

53

F#m7

57

D<sup>9</sup>sus

61

E<sup>b</sup>m7(#11)

65

69

73

A<sup>b</sup>7 A7 A<sup>b</sup>7 A7

77

A<sup>b</sup>7 A7 A<sup>b</sup>7 A<sup>b</sup>7

81

E<sup>m</sup>A7 D#m7(no5) C#m7(no5) Cm7(no5)

85

A#<sup>o</sup>7 A#<sup>o</sup>7/G# D#7(b9) 3

89

G#m7 G#m7/F# C#9

93

E<sup>m</sup>A7 D#m9 C#m7 C9

**Appendix 2 for D Nacey Music 757 June 2010: Composed piece #1**

**ROSEN KONCEPT**

MEDIUM UP LATIN

D NACEY

AMA7                      GMA7(#11)                      FMA7(#11)                      BbMA7(#11)

Gb9(#11)                      Dbm6                      Gb9(#11)                      Gb/Ab

Detailed description: This block contains the first system of music, measures 1 through 4. The top staff is in treble clef with a 4/4 time signature. The bottom staff is in bass clef. The key signature has one sharp (F#). The music consists of eighth and quarter notes with various accidentals. Chord symbols are placed above and below the staves.

AMA7                      GMA7(#11)                      FMA7(#11)                      BbMA7(#11)

Gb9(#11)                      Dbm9                      Gb9(#11)                      Gb/Ab

Detailed description: This block contains the second system of music, measures 5 through 8. The top staff is in treble clef. The bottom staff is in bass clef. The key signature has one sharp (F#). The music continues with eighth and quarter notes. Chord symbols are placed above and below the staves.

AMA7                      GMA7(#11)                      FMA7(#11)                      BbMA7(#11)

Gb9(#11)                      Dbm9                      Gb9(#11)                      Gb/Ab

Detailed description: This block contains the third system of music, measures 9 through 12. The top staff is in treble clef. The bottom staff is in bass clef. The key signature has one sharp (F#). The music continues with eighth and quarter notes. Chord symbols are placed above and below the staves.

BMA7                      AMA7(#11)                      GMA7(#11)                      CMA7(#11)

Detailed description: This block contains the fourth system of music, measures 13 through 16. The top staff is in treble clef. The bottom staff is in bass clef. The key signature has one sharp (F#). The music features triplet markings over groups of three notes. Chord symbols are placed above the staff.

G#9(#11)                      D#m9                      G#9(#11)                      G#/A#

Detailed description: This block contains the fifth system of music, measures 17 through 20. The top staff is in treble clef. The bottom staff is in bass clef. The key signature has two sharps (F# and C#). The music features triplet markings over groups of three notes. Chord symbols are placed above the staff.

Bm<sup>A</sup>7                      Am<sup>A</sup>7(#11)                      Gm<sup>A</sup>7(#11)                      Cm<sup>A</sup>7

33 3 3 3 3 3 3 3 3 3 3 3 3 3 3 3 3 3

G#9(#11)                      D#m<sup>9</sup>                      G#9(#11)                      G#/A#


37 3 3 3 3 3 3 3 3 3 3 3 3 3 3 3 3 3

Composed piece #2

KREISBERGIAN MINDSET

D NACEY

Am<sup>11</sup> Bm<sup>11</sup> Gm<sup>11</sup> Abm<sup>7</sup> Fm<sup>7</sup> Cm<sup>9</sup> Eb<sup>9</sup>sus G/Ab C/D<sup>b</sup>



Em<sup>13</sup> Bm<sup>11</sup> Gm<sup>11</sup> Fm<sup>9</sup> Cm<sup>11</sup> Ab<sup>9</sup>(#11) F/G F#/G



Am<sup>11</sup> Bm<sup>11</sup> Gm<sup>11</sup> Abm<sup>7</sup> Fm<sup>7</sup> Cm<sup>9</sup> Eb<sup>9</sup>sus G/Ab C/D<sup>b</sup>



Em<sup>13</sup> Bm<sup>11</sup> Gm<sup>11</sup> Fm<sup>9</sup> Cm<sup>11</sup> Ab<sup>9</sup>(#11) F/G F#/G



Am<sup>11</sup> Bm<sup>11</sup> Gm<sup>11</sup> Abm<sup>7</sup> Fm<sup>7</sup> Cm<sup>9</sup> Eb<sup>9</sup>sus G/Ab C/D<sup>b</sup>



Em<sup>13</sup> Bm<sup>11</sup> Gm<sup>11</sup> Fm<sup>9</sup> Cm<sup>11</sup> Ab<sup>9</sup>(#11) F/G F#/G

